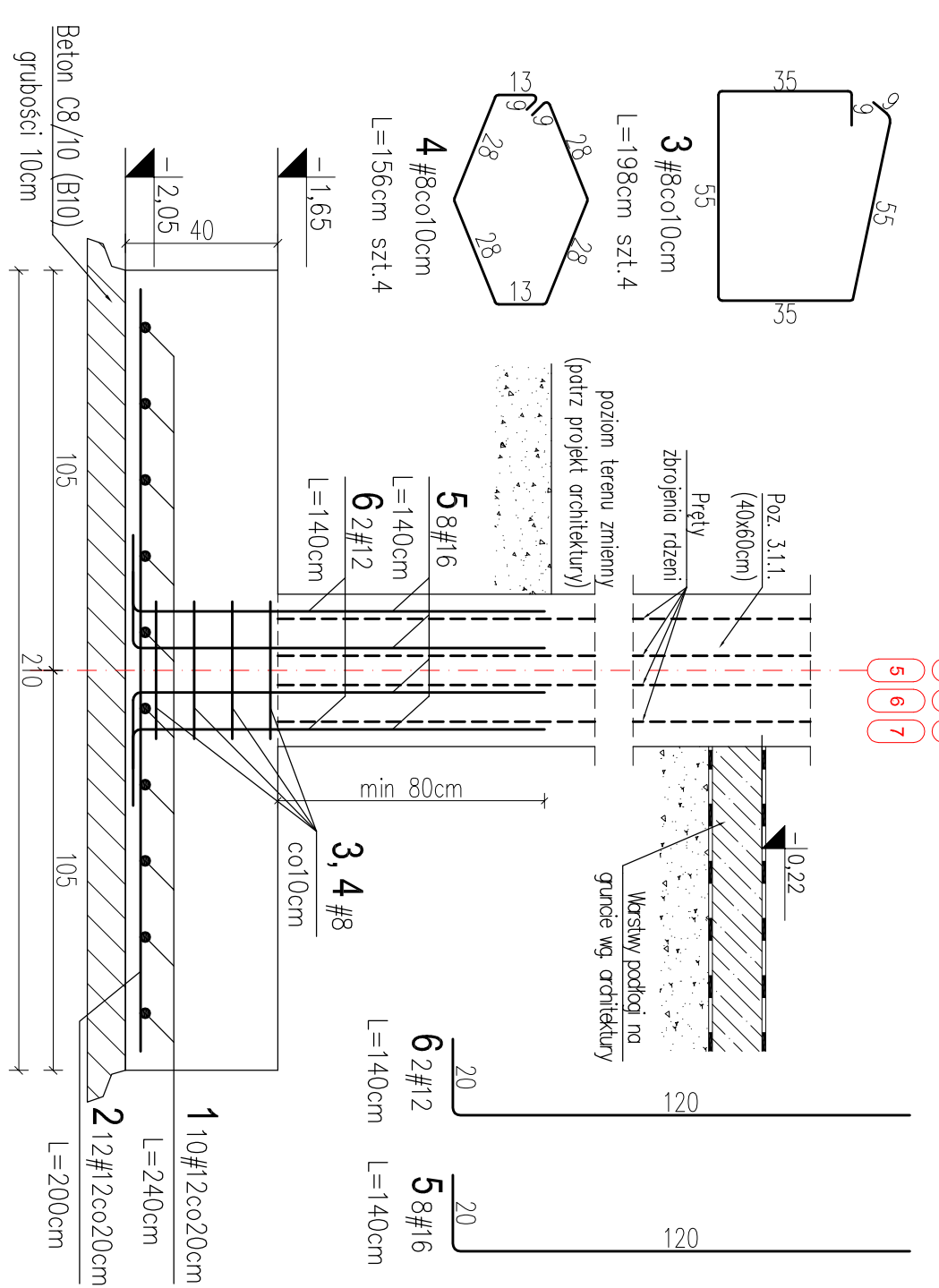
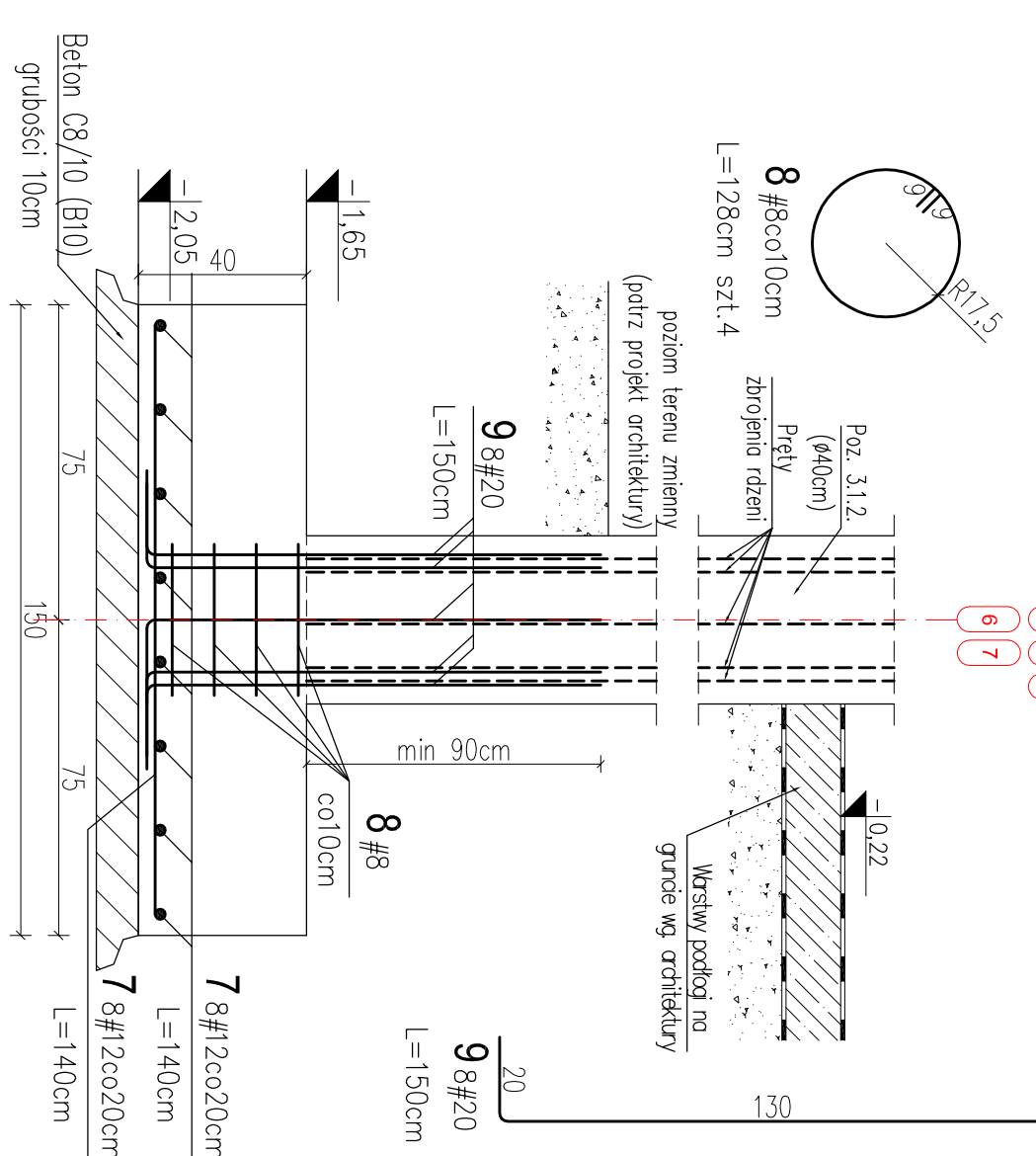


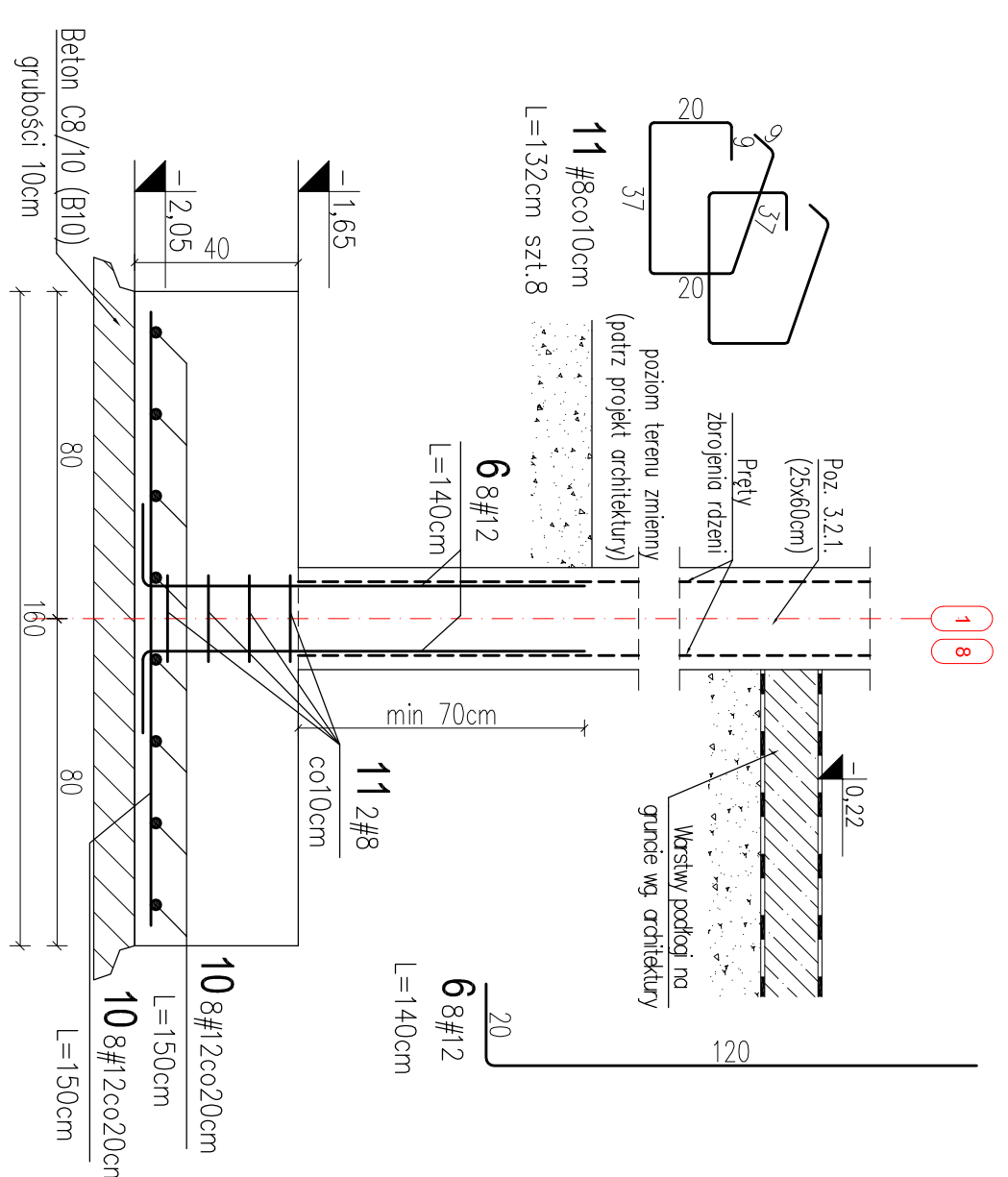
Poz.1.2.1. sztl.7
210x250cm
(skala 1:25)



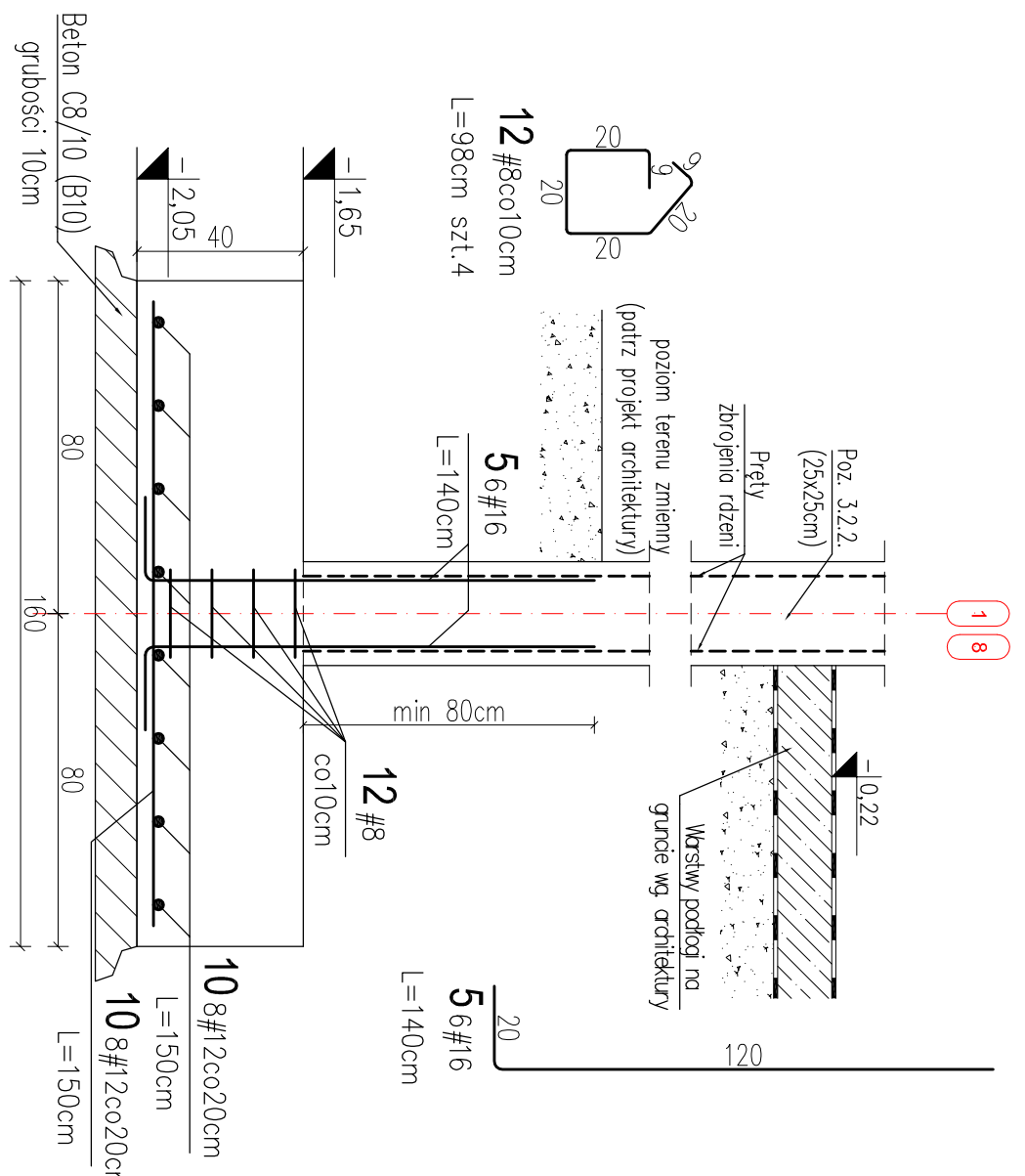
Poz.1.2.2. sztl.5
150x150cm
(skala 1:25)



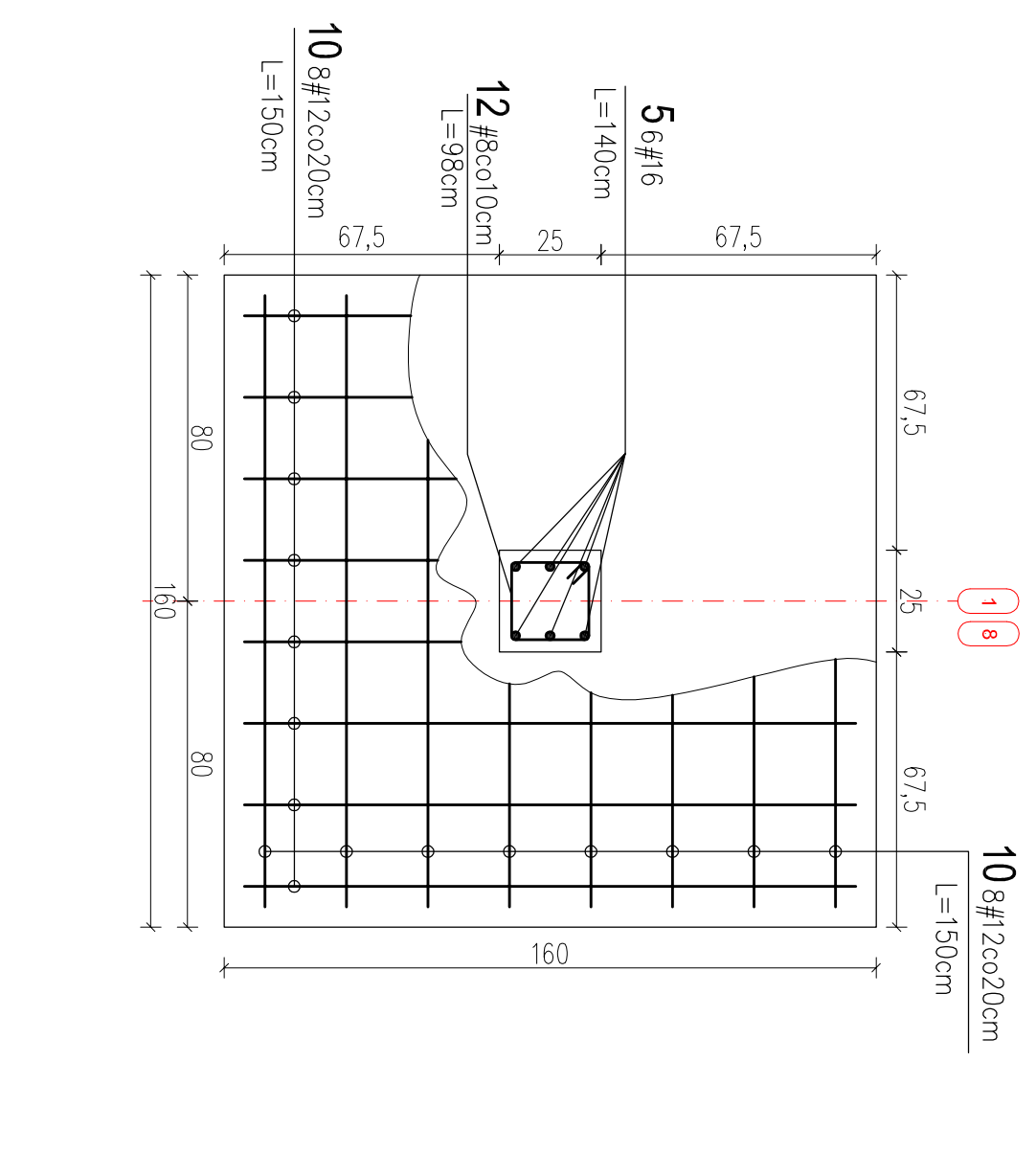
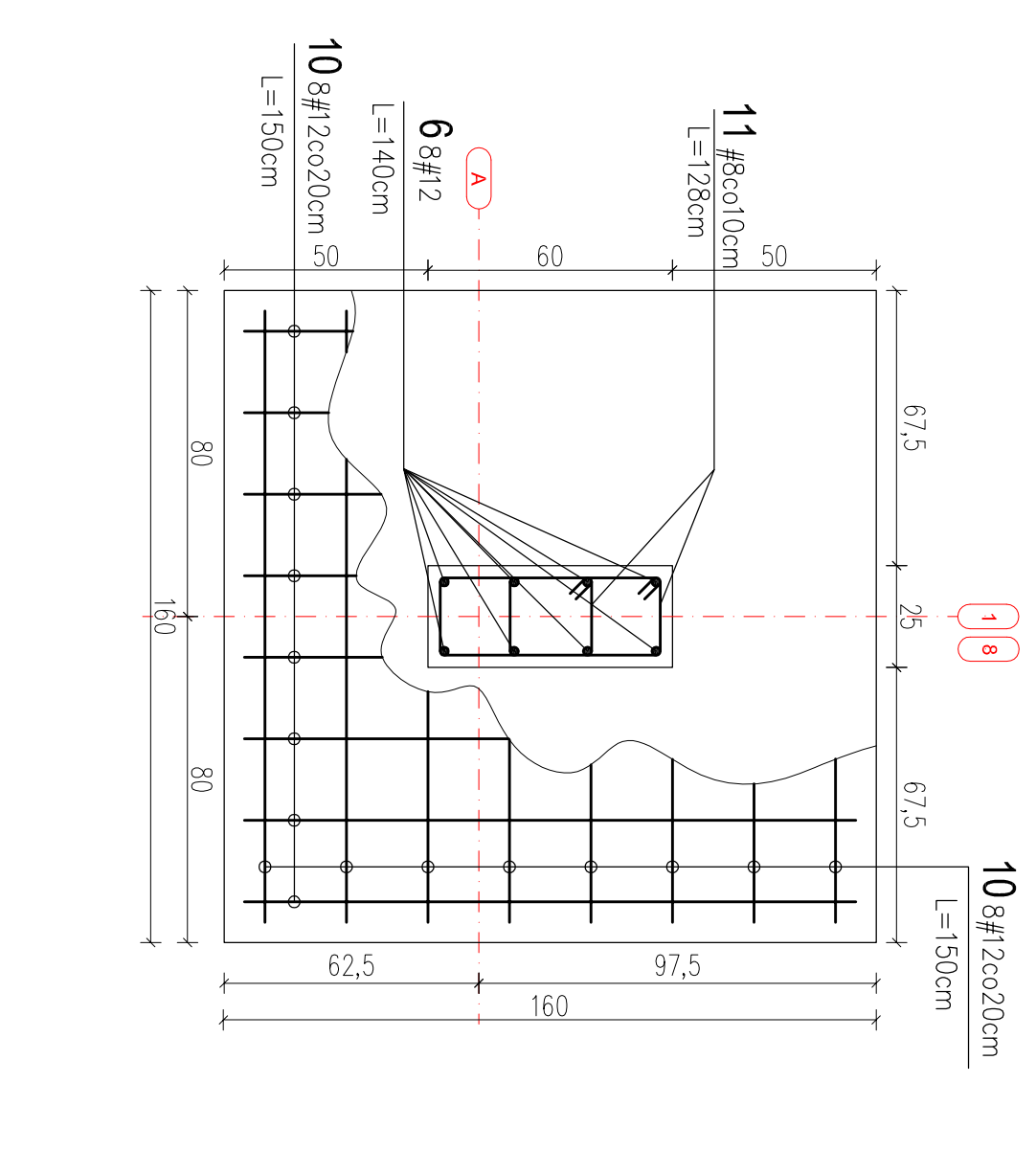
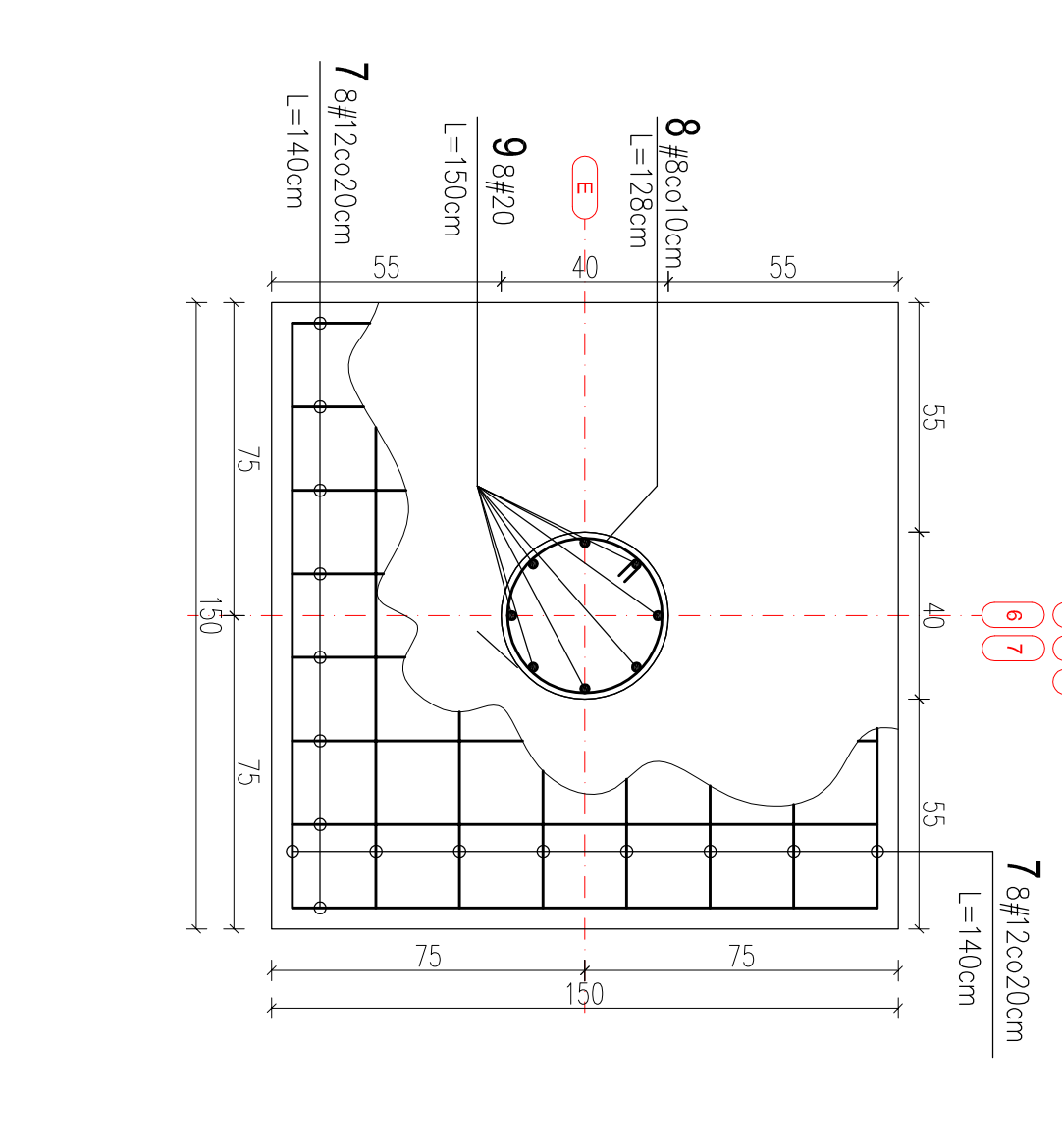
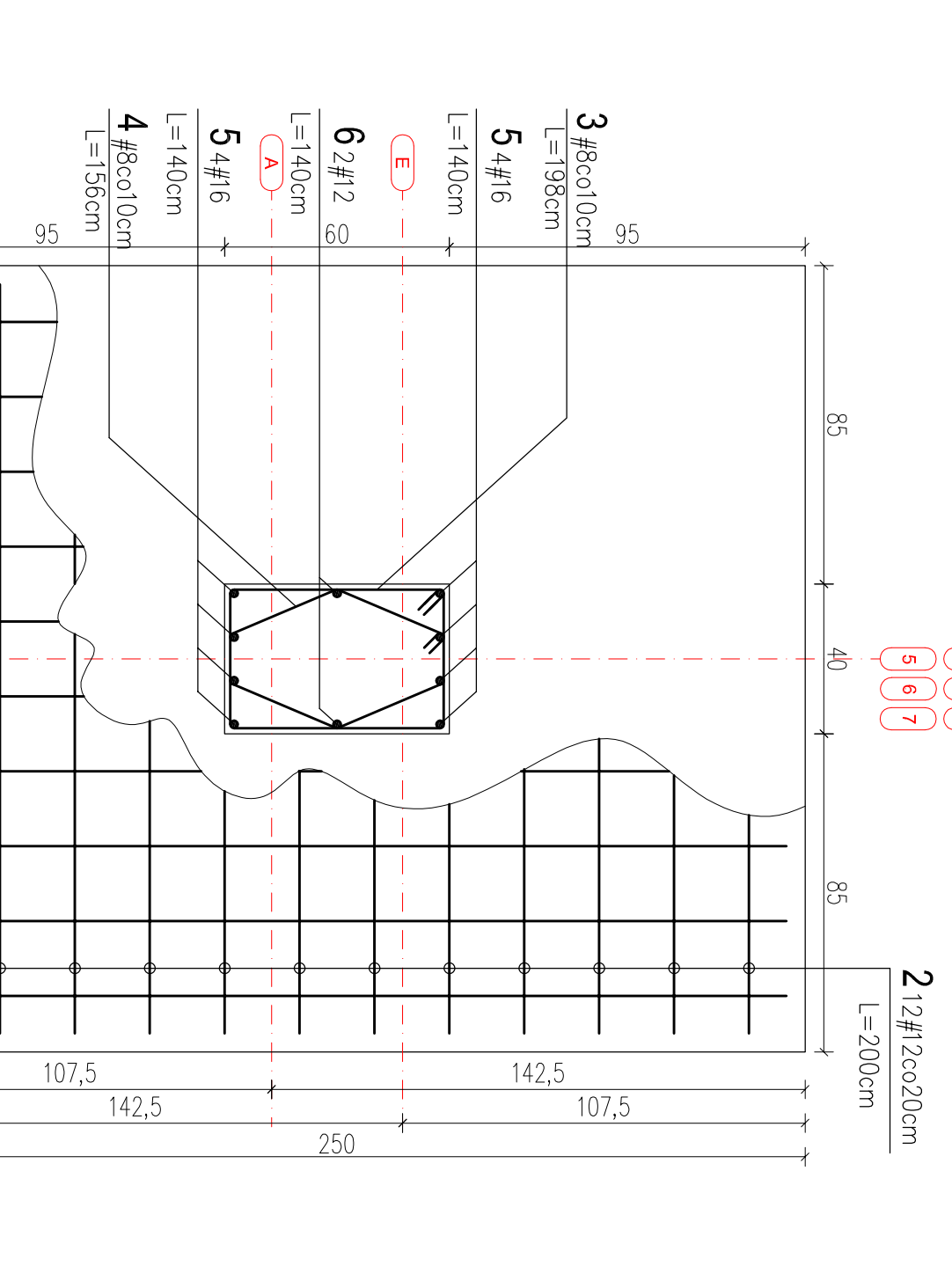
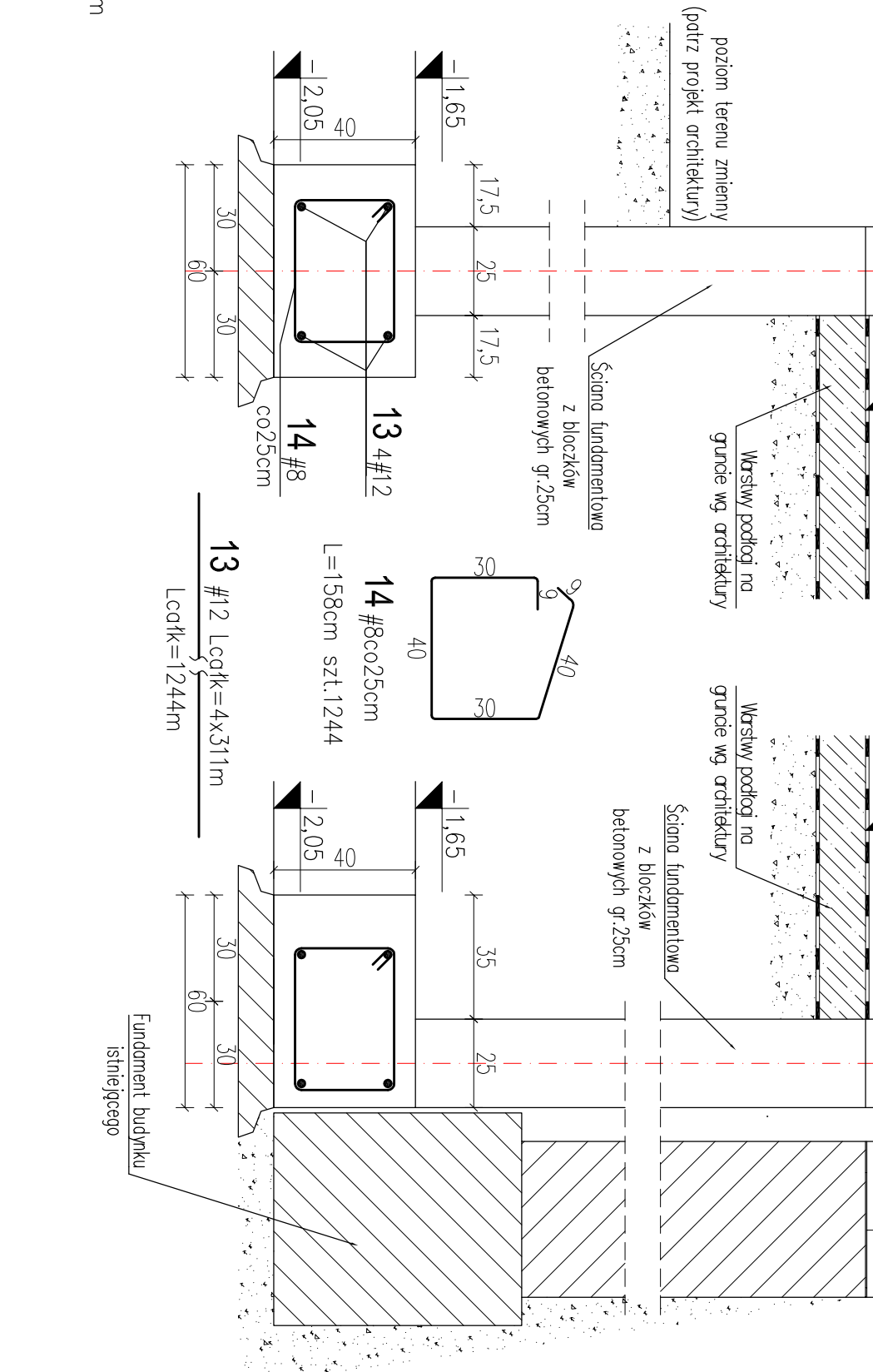
Poz.1.2.3. sztl.2
160x160cm
(skala 1:25)



Poz.1.2.4. sztl.10
160x160cm
(skala 1:25)



Poz. 1.1.1.
L=282,7m
(50x40cm)
(skala 1:25)



WYKAZ STALI ZBROJENIOWEJ									
Stopy ławy fundamentowej									
Element: 1									
Ilość elementów:									
Nr grupy	#	A11 N	Długość	Średn.	Waga	Długość elementu powtór.	A11 N	#	Waga
1	1	12	2000	12	2000	88	12	16	2000
2	2	12	2000	12	2000	88	12	16	2000
3	3	8	1800	8	1800	28	8	16	1800
4	4	12	1800	12	1800	28	12	16	1800
5	5	12	1400	12	1400	28	12	16	1400
6	6	12	1400	12	1400	28	12	16	1400
7	7	12	1400	12	1400	28	12	16	1400
8	8	12	1400	12	1400	28	12	16	1400
9	9	20	1500	20	1500	40	20	16	1500
10	10	12	1500	12	1500	40	12	16	1500
11	11	8	900	8	900	40	8	16	900
12	12	8	900	8	900	40	8	16	900
13	13	12	311000	12	311000	44	12	16	311000
14	14	12	198532	12	198532	1244,00	12	16	198532
15	15	12	210556	12	210556	162,40	12	16	210556
16	16	12	202270	12	202270	162,40	12	16	202270
17	17	12	198532	12	198532	1244,00	12	16	198532
18	18	12	198532	12	198532	1244,00	12	16	198532
19	19	12	198532	12	198532	1244,00	12	16	198532
20	20	12	198532	12	198532	1244,00	12	16	198532
21	21	12	198532	12	198532	1244,00	12	16	198532
22	22	12	198532	12	198532	1244,00	12	16	198532
23	23	12	198532	12	198532	1244,00	12	16	198532
24	24	12	198532	12	198532	1244,00	12	16	198532
25	25	12	198532	12	198532	1244,00	12	16	198532
26	26	12	198532	12	198532	1244,00	12	16	198532
27	27	12	198532	12	198532	1244,00	12	16	198532
28	28	12	198532	12	198532	1244,00	12	16	198532
29	29	12	198532	12	198532	1244,00	12	16	198532
30	30	12	198532	12	198532	1244,00	12	16	198532
31	31	12	198532	12	198532	1244,00	12	16	198532
32	32	12	198532	12	198532	1244,00	12	16	198532
33	33	12	198532	12	198532	1244,00	12	16	198532
34	34	12	198532	12	198532	1244,00	12	16	198532
35	35	12	198532	12	198532	1244,00	12	16	198532
36	36	12	198532	12	198532	1244,00	12	16	198532
37	37	12	198532	12	198532	1244,00	12	16	198532
38	38	12	198532	12	198532	1244,00	12	16	198532
39	39	12	198532	12	198532	1244,00	12	16	198532
40	40	12	198532	12	198532	1244,00	12	16	198532
41	41	12	198532	12	198532	1244,00	12	16	198532
42	42	12	198532	12	198532	1244,00	12	16	198532
43	43	12	198532	12	198532	1244,00	12	16	198532
44	44	12	198532	12	198532	1244,00	12	16	198532
45	45	12	198532	12	198532	1244,00	12	16	198532
46	46	12	198532	12	198532	1244,00	12	16	198532
47	47	12	198532	12	198532	1244,00	12	16	198532
48	48	12	198532	12	198532	1244,00	12	16	198532
49	49	12	198532	12	198532	1244,00	12	16	198532
50	50	12	198532	12	198532	1244,00	12	16	198532
51	51	12	198532	12	198532	1244,00	12	16	198532
52	52	12	198532	12	198532	1244,00	12	16	198532
53	53	12	198532	12	198532	1244,00	12	16	198532
54	54	12	198532	12	198532	1244,00	12	16	198532
55	55	12	198532	12	198532	1244,00	12	16	198532
56	56	12	198532	12	198532	1244,00	12	16	198532
57	57	12	198532	12	198532	1244,00	12	16	198532
58	58	12	198532	12	198532	1244,00	12	16	198532
59	59	12	198532	12	198532	1244,00	12	16	198532
60	60	12	198532	12	198532	1244,00	12	16	198532
61	61	12	198532	12	198532	1244,00	12	16	198532
62	62	12	198532	12	198532	1244,00	12	16	198532
63	63	12	198532	12	198532	1244,00	12	16	198532
64	64	12	198532	12	198532	1244,00	12	16	198532
65	65	12	198532	12	198532	1244,00	12	16	198532
66	66	12	198532	12	198532	1244,00	12	16	198532
67	67	12	198532	12	198532	1244,00	12	16	198532
68	68	12	198532	12	198532	1244,00	12	16	198532
69	69	12	198532	12	198532	1244,00	12	16	198532
70	70	12	198532	12	198532	1244,00	12	16	198532
71	71	12	198532	12	198532	1244,00	12	16	198532
72	72	12	198532	12	198532	1244,00	12	16	198532
73	73	12	198532	12	198532	1244,00	12	16	198532
74	74	12	198532	12	198532	1244,00	12	16	198532
75	75	12	198532	12	198532	1244,00	12	16	198532
76	76	12	198532	12	198532	1244,00	12	16	198532
77	77	12	198532	12	198532	1244,00	12	16	198532
78	78	12	198532	12	198532	1244,00	12	16	198532
79	79	12	198532	12	198532	1244,00	12	16	198532
80	80	12	198532	12	198532	1244,00	12	16	198532
81	81	12	198532	12	198532	1244,00	12	16	198532
82	82	12	198532	12	198532	1244,00	12	16	198532
83	83	12	198532	12	198532	1244,00	12	16	198532
84	84	12	198532	12	198532	1244,00	12	16	198532
85	85	12	198532	12	198532	1244,00	12	16	198532
86	86	12	198532	12	198532	1244,00	12	16	198532
87	87	12	198532	12	198532	1244,00	12	16	198532
88	88	12	198532	12	198532	1244,00	12	16	198532
89	89	12	198532	12	198532	1244,00	12	16	198532
90	90	12	198532	12	198532	1244,00	12	16	198532
91	91	12	198532	12	198532	1244,00	12	16	198532
92	92	12	198532	12	198532	1244,00	12	16	198532
93	93	12	198532	12	198532	1244,00	12	16	198532
94	94	12	198532	12	198532	1244,00	12	16	198532
95	95	12	198532	12	198532	1244,00	12	16	